

S
H
A
M
O
K
I
N

AREA JOINT HIGH SCHOOL ANNEX

DEDICATION

MARCH 25, 1957

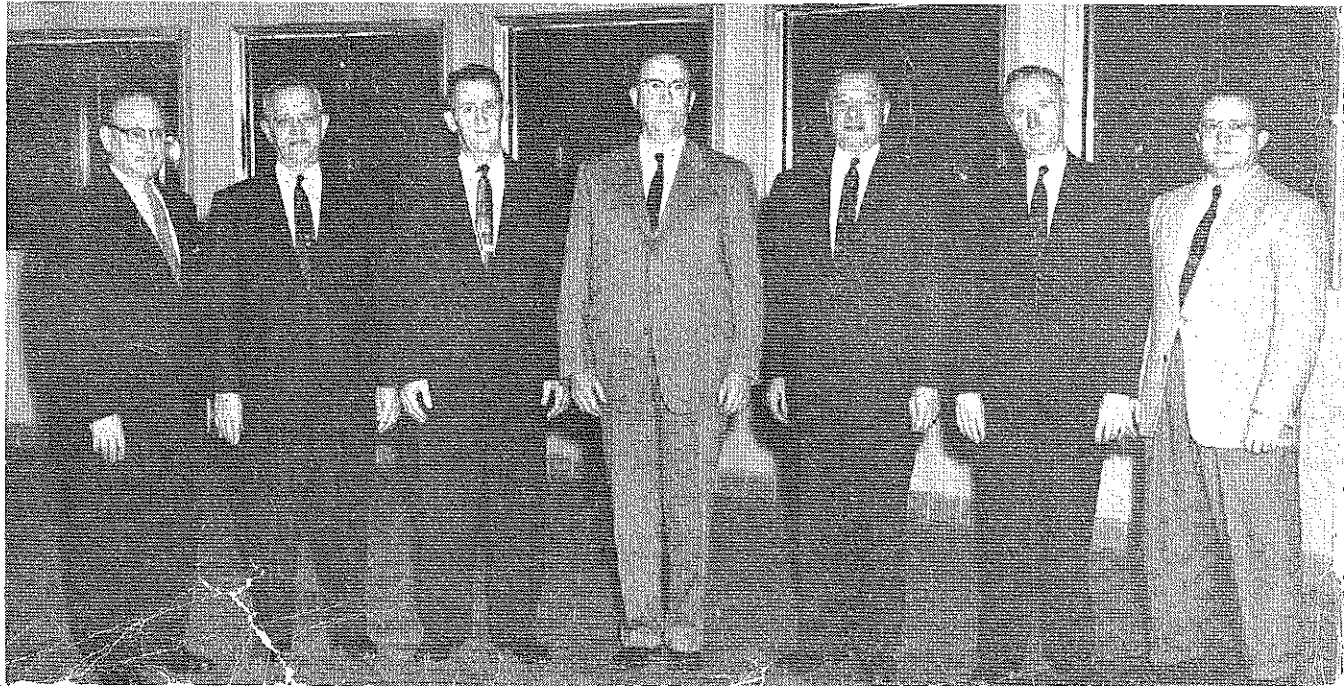
Board of Education

Left to right: Eugene B. Troutman, Treasurer; Joseph J. Kanas-kie; George W. Krieger; George F. Artman; Fred A. Thomas; Dr. Clifford V. Jones, Superintendent; Mildred Byerly, Secretary; Mrs. J. Robert Vastine, President; George Troxell, Vice President; Robert M. Maue; Robert P. Dockey; Darrell M. Boyer; T. Chester Lark; F. F. Reamer, Solicitor.
Absent: Daniel Crowle.



School Building Authority

Left to right: Charles F. Miller, Vice Chairman; Levi Korbich; Ray Kerstetter; William H. Ressler, Chairman; Frederick E. Lark, Solicitor; John M. Phillips, Treasurer; Robert Duncan, Secretary.





Superintendent of Schools
Dr. Clifford V. Jones

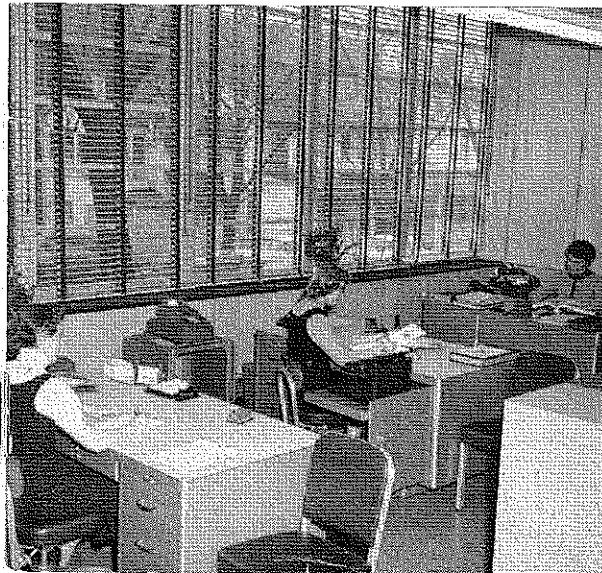
ADMINISTRATION

The Administration and the Board of Education foresee the needs of youth by providing adequate plant and learning facilities. An enriched educational program including special training based on individual instruction helps to prepare the student to take his place in an ever expanding democratic society.



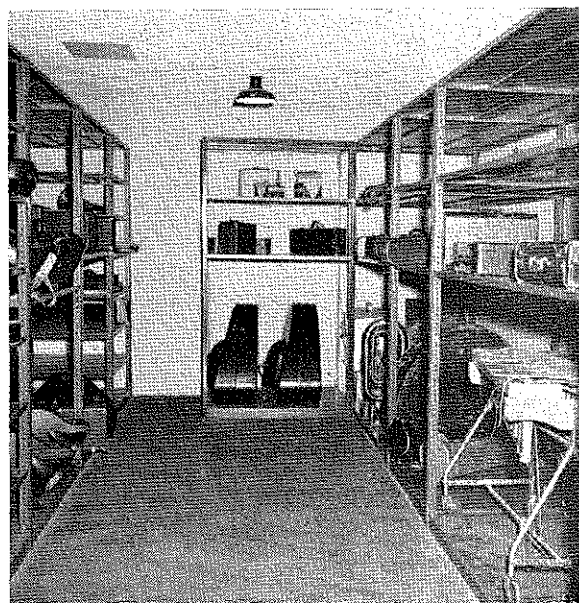
High School Principal
Paul Swank

Administrative Offices



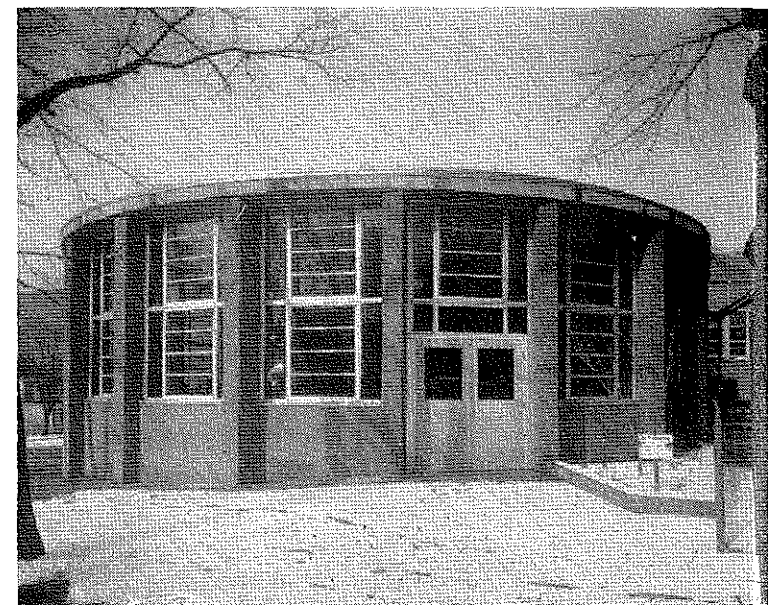


The orchestra as well as the band uses the instrumental rehearsal room



Controlled heat and ventilation assures care and safety in storing instruments

Structural design gives acoustical balance



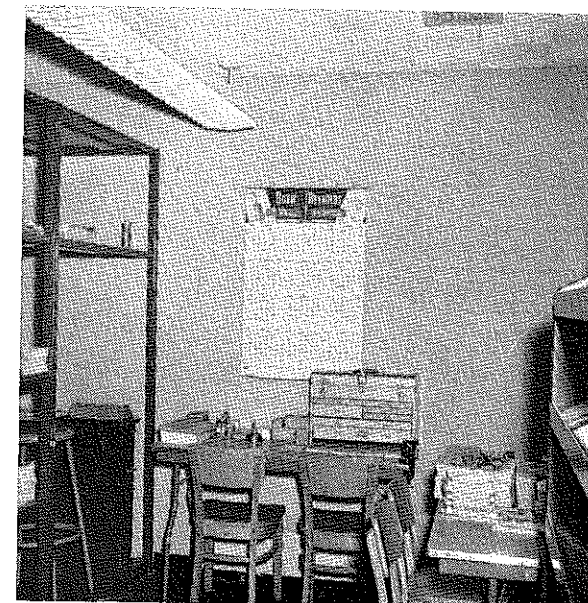


The ultra modern design of this rehearsal room with its light, pleasant setting promotes effective and stimulating musical activities



Learning improves with individual instruction.

Music Storage Room

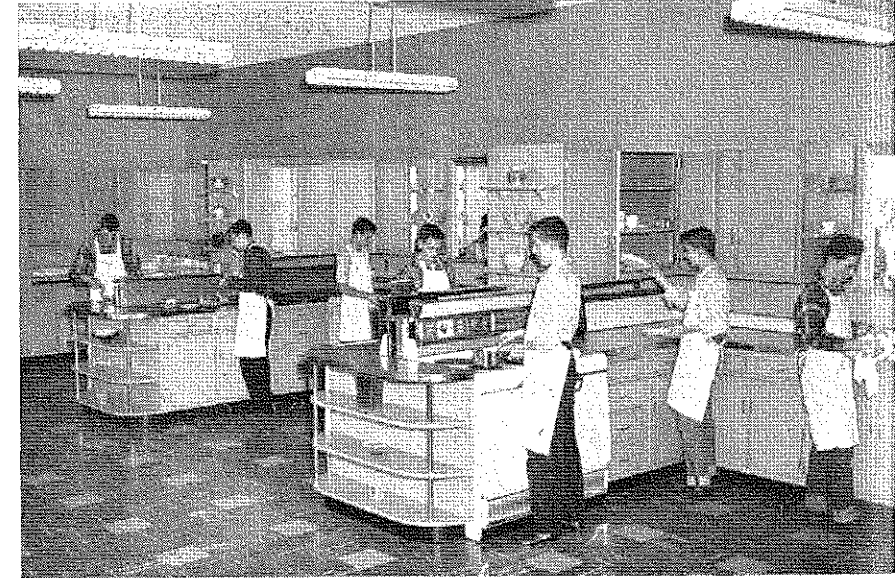
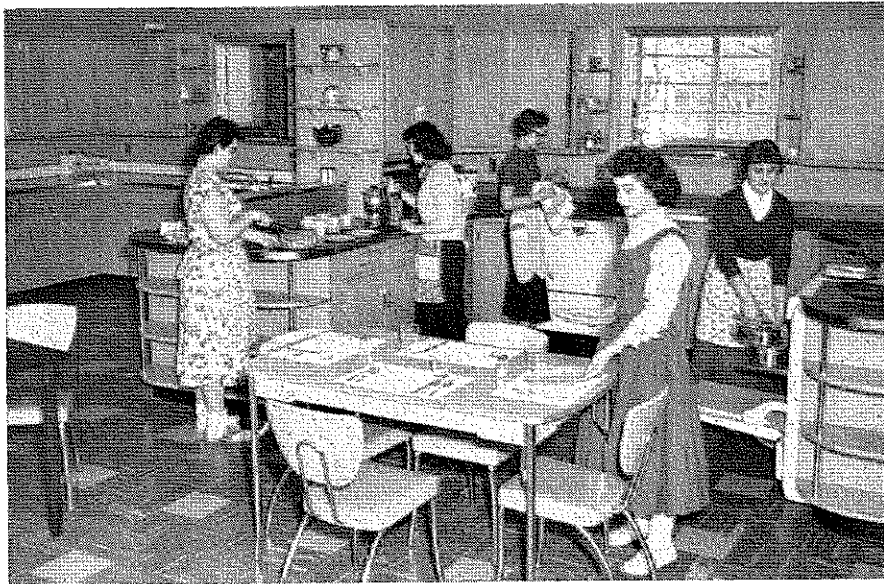


HOMEMAKING

This department has
been planned to carry on
a family centered program

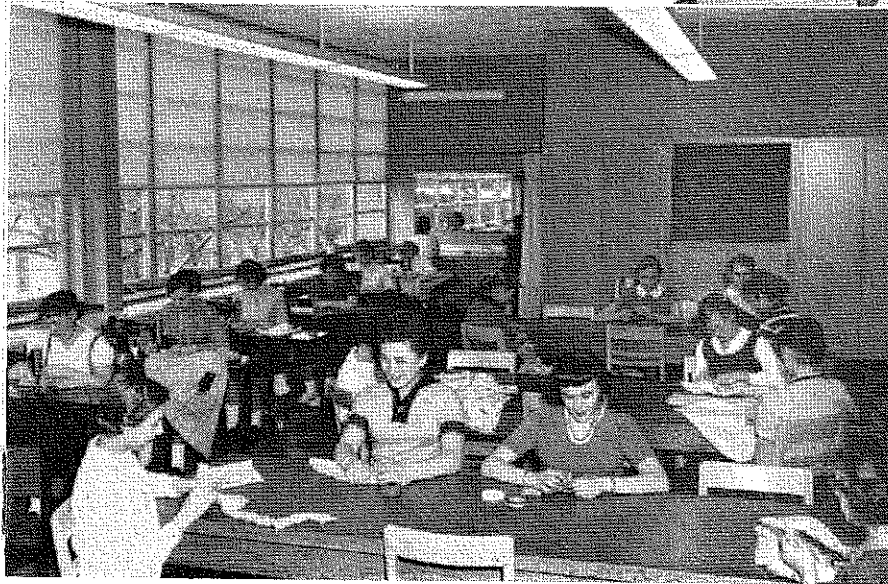


Today's kitchen has the latest
laundry equipment

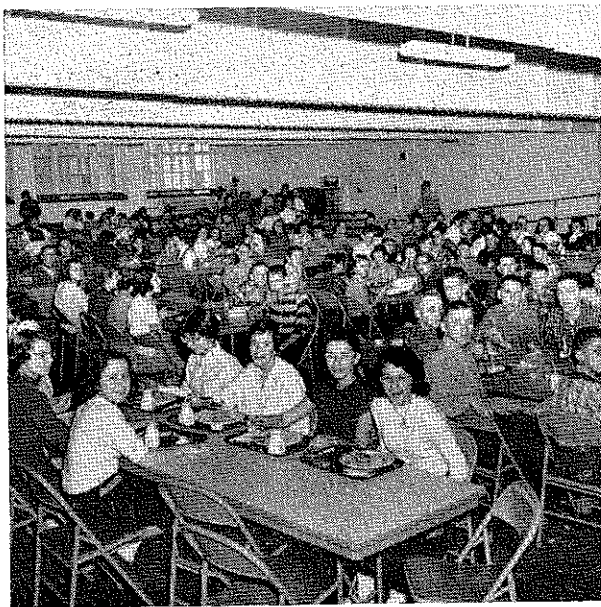


All kitchens are designed for meal planning, preparation, and serving of foods

A well planned family
room consists of living
center, kitchen and
dining area



The clothing rooms feature fitting facilities, excellent storage space, and grooming bar



Dining Area



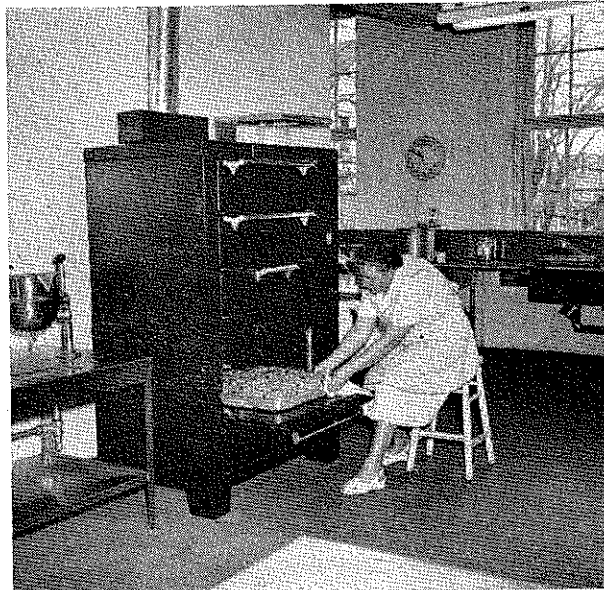
Serving Area



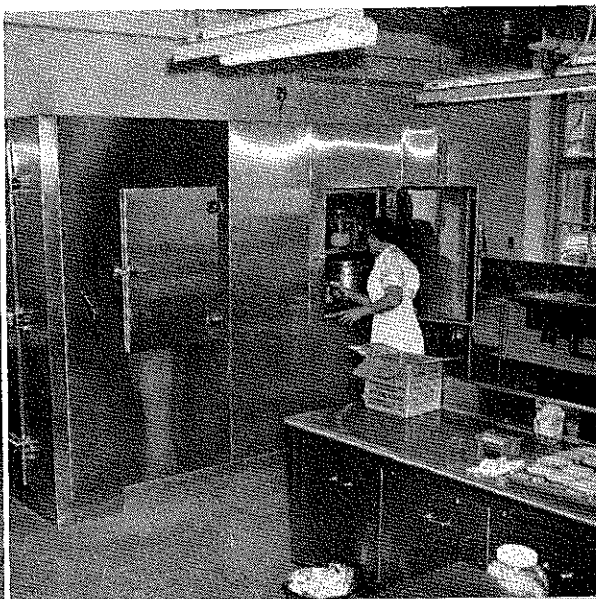
Informal Dance

CAFETERIA AND STUDENT CENTER

Baking

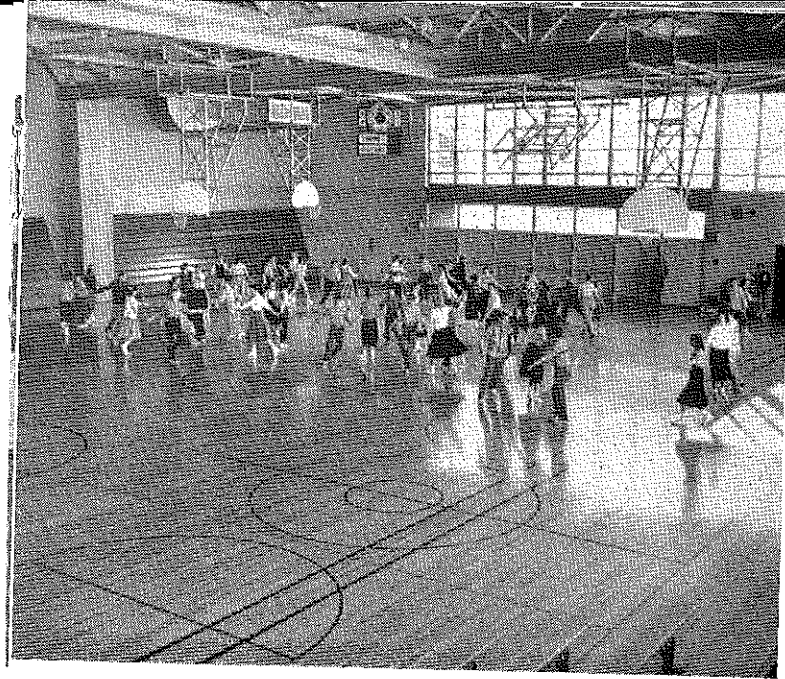


Food Storage



Food Preparation

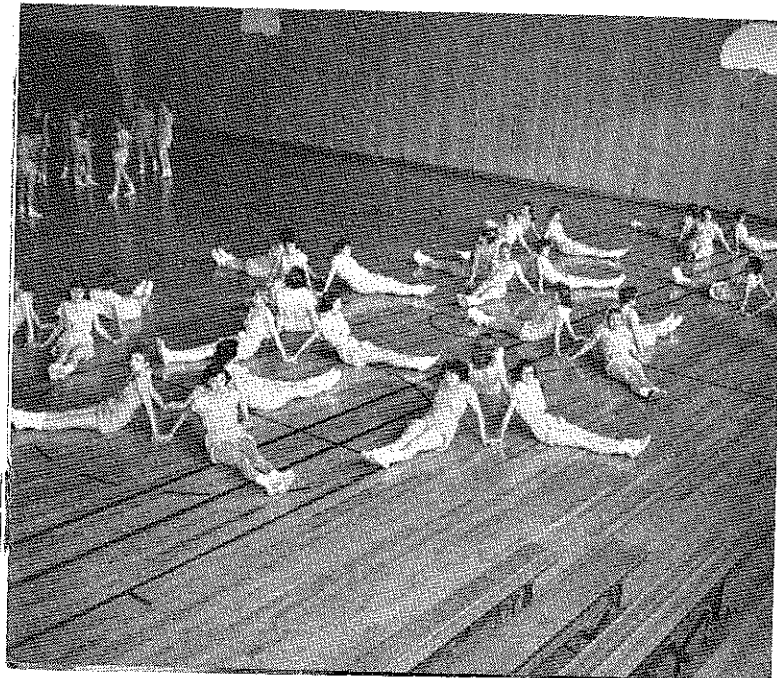




Co-Educational Dance Instruction

P
H
Y
S
I
C
A
L

E
D
U
C
A
T
I
O
N



Girls' Physical Education Class



Boys' Physical Education Class



A GYMNASIUM THAT IS

The gymnasium is divided by electrically operated doors into three separate areas